



2005 BJCP Update
AHA Homebrewer Conference
June 18, 2005

Ron Bach, President



Agenda



Introduction of Representatives and Directors
Financial Overview
BJCP Merchandising
GMSR Revisions
Promotions to Grand Master
Exam Committee Status
Continuing Education Program
Discussion / Q&A



Introduction of Representatives

Northeast Region

Mid-Atlantic Region

Mountain/Northwest Region

North Region

Midwest Region

South Region

West Region

Peter Garofalo, VP

Gordon Strong

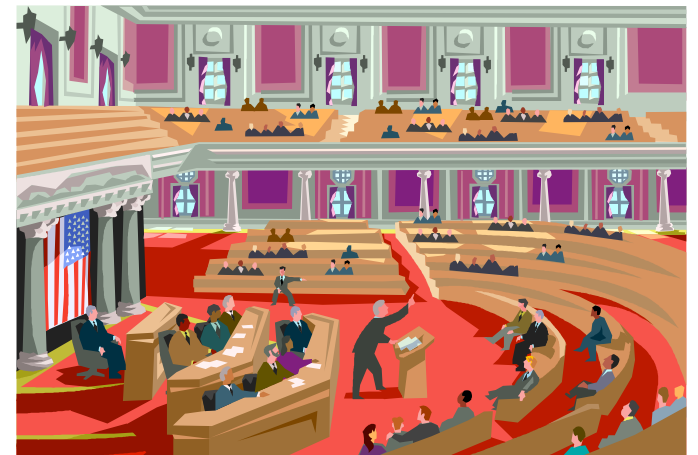
Mike Hall

Al Boyce, Treasurer

Joe Formanek

Ron Bach, President

Dave Sapsis

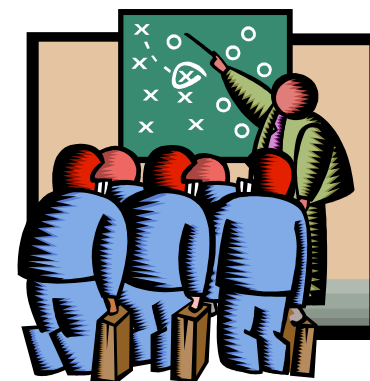


Introduction of Directors



Program Administrator
Exam Director, East
Exam Director, West
IT Director
Competition Director
Communication Director
Continuing Education Director

Russ Wigglesworth
Scott Bickham
Steve Piatz
Gordon Strong
David Houseman
Ed Westemeier
Kristen England



Financial overview and review of events of last year

- **Financial Changes**
- **Latest Quarterly Statement**
- **501 C Not-For Profit Status**



BJCP QUARTERLY FINANCIAL REPORT

March 31, 2005

INCOME		
1	BJCP Examination Fees	2084.00
2	BJCP Contest Certification Fees	320.00
3	BJCP Merchandise Receipts	172.23
4	Misc. Income	166.37
5	Returned Checks	0.00
	Total	2742.60

Prior Balance	4632.21
Income	2742.60
Expenses	1053.57
Current Balance	6321.24
Checks Outstanding	657.83
Account Balance Showing	6979.07



EXPENSES		
1	BJCP Grants	0.00
2	Continuing Education Program	0.00
3	Income Tax	0.00
4	Legal Fees	0.00
5	Mailings: Examinees	0.00
6	Mailings: Reimbursees	0.00
7	Merchandise (for resale)	0.00
8	Miscellaneous	80.00
9	Office Supplies, Misc.	133.57
10	PO Box Rental	0.00
11	Postage	279.00
12	Printing: Examinees	0.00
13	Recognition Pins	0.00
14	Reimbursement: Exam Directors	0.00
15	Reimbursement: Exam Graders	561.00
16	Shipping: Merchandise	0.00
17	Surety Bond	0.00
18	Telephone	0.00
19	Website	
	Total	1053.57

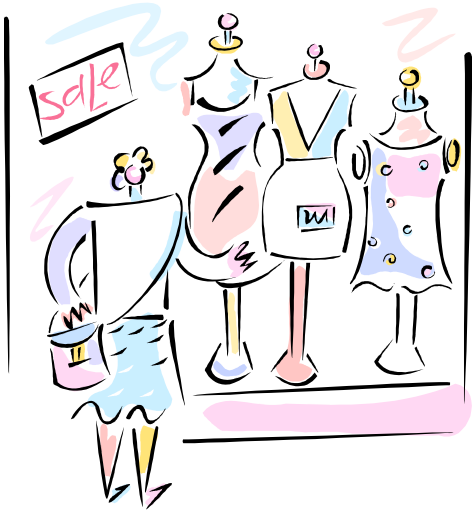
New BJCP Treasury Initiatives Since June 1, 2004

- **Opened new BJCP bank account**
- **Authorized 3 signatories on account (Treasurer, President, Vice President)**
- **Requires 2 signatories on payment amounts over \$500**
- **All signatories receive copies of BJCP books and bank statements monthly**
- **Reinstated publication of Annual Report on website**
- **Instituted quarterly reports to Board of Directors**
- **Instituted standard remittance and reimbursement form**
- **Reconstructed BJCP books from 2002 to 2004**
- **Filed tax exempt paperwork with the IRS**
- **Initiated and purchased \$15,000 surety bond on the BJCP Treasurer**
- **Initiated PayPal payment ability for cloisonné pins and BJCP competitions**



BJCP Merchandising

- **Cloisonné Pins for Recognized and Certified Judges**
- **CaféPress Stenciled items**
- **BobNWeave for embroidered shirts and hats.**



GMSR Revisions



Main Changes

Changes commenced on June 1, 2005.

Grading exams a requirement of everyone including Directors and Representatives.

Reduced GMSR credit received by Representatives and Directors

Increases grading credit for lead graders.

Doubles non-judging points earned in conjunction with GMSR credits earned.

Decreases GMSR credits earned Administering and proctoring exams.

Implemented rapid awarding of credits for committee service performed.

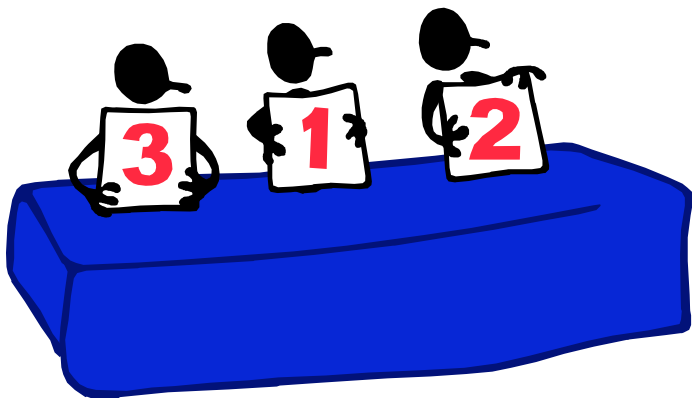
Records updated after June 1 of each year for GMSR performed.





Promotions to Grand Master

Gordon Strong to Grand Master II
Ed Westemeier to Grand Master I
Steve Piatz to Grand Master I
Ron Bach to Grand Master I
Gregg Smith to Grand Master I



Exam Committee Status



Chairman – Ed Wolfe

Committees includes Reps, Directors, Experienced Graders

Objectives:

Improve exam validity and scoring protocols

Decrease exam turnaround time

Ease burden of writing

Maintain Standards of current exam

Exam weights to remain 70% written, 30% tasting

Procedural changes to tasting portion of exam

Improved directions for exam beer preparation

New score sheets for proctors

Consensus process for proctors

20-30% change to essay portion to alternate format questions

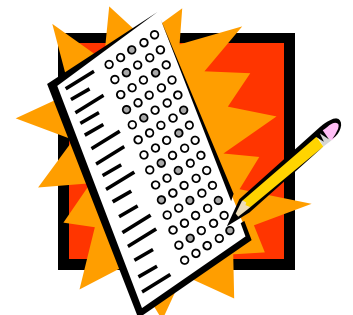
Multiple choice, fill-in-the-blank, True/False, matching, short answer

Phased implementation - changes systematically tested

Board approval required of plan

Study Guide will be revised to reflect scope of exam

Completion of exam committee work: late 2005 or early 2006



Continuing Education Program

Purpose of Continuing Education Program:

To provide, recognize and encourage worthwhile continuing education opportunities for the BJCP member.

Established a new directorate:

Director: Kris England

Asst. Director: Ted Hausotter

Asst. Director: Kevin Pratt



Initial Educational Events

BREWs (Brewing Review Education and Wisdom Sessions)

Special BREW

BICEPs (BJCP Instructional Course for Educational Progression)

BREWs

Hallmark of the CEP is the short courses education program

Emphasis is on judging of Beer, Mead and Cider using score sheets

Will include technical topics

Three stylistic topics in each presentation

BJCP Members must attend full session, complete score sheets and take quiz at end of presentation

Points awarded to event organizers, presenters, BJCP attendees

BREWs Required Content

Must apply one month in advance

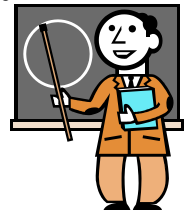
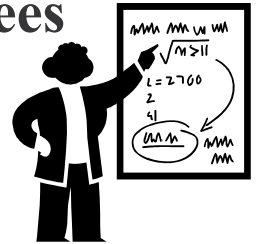
Minimum participants are five BJCP Judges (Non BJCP Judges may attend but do not receive credit)

Must submit Outline or Syllabus, Presenter (s) credentials and their topics

Include proposed class length

Submit description of flawed beer, mead or cider for tasting.

Copy of test questions



Special Event BREWs

A variation of the BREWs sessions.

Two different types

Large regional competitions or courses organized by “third parties”

AHA Nationals

MCAB

Dixie Cup

Siebel

UC Davis

Creative Special Events (generally club sponsored special events)

Brewer Led Tastings

Some Pub Crawls

Triangle Tasting Sessions

Detailed Brewing Sessions (e.g. teaching decoction)

Special Meeting (e.g. tour of a malt house)

Non-judging experience points available to BJCP members who present and attend



BICEPs

Brewers basic education class (may lead to taking the BJCP Exam)

A formalized course of instruction which may include:

Style

Technical Subjects

Judging

Brewing

Consists of a series of classes which range from 10-15 sessions

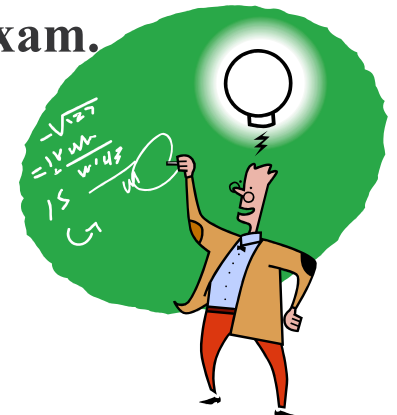
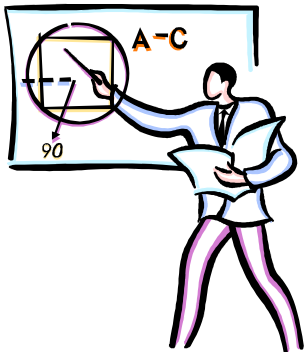
Taught over a period of time (typically 1-4 months)

Similar to BREWS individual classes except a whole course of instruction

CEP points given only to BJCP members either presenting topics or taking the course.

Credit to major educational programs 24 months retroactive from 1/1/2005

to organizers, presenters and BJCP member attendees. No credit given to non BJCP member attendees including those studying for the exam.



CEP ONLINE FORMS

BREWS Application
SPECIAL Event BREWs Application
BICEP Series Application
Higher Learning Credit Form
Evaluation Form



NON-JUDGING EXPERIENCE POINTS

FUTURE CEP PROJECTS

Sensory Evaluation Kit
Beer Vocabulary
Development of CEP products and programs available directly from the BJCP (Includes DVD based educational presentations).





Discussion / Q&A

